



Santa Ponsa, Calvia

Semi-detached, traditional house with amazing views in Santa Ponsa

Ref. 43233 650.000 €



4



2



104 m²



11 m²

This semi-detached, traditional house is located in a quiet street in the residential part of Santa Ponsa, away from all the tourist attractions. The house benefits from a luscious garden with beautiful trees and flowers as well as panoramic views of the mountains.

You can access the house from the bottom road, up the stairs and via a side gate. There is also the option to park in a small private street on the top road where the car port is located, with space for 2 cars. The pool area with the lovely mountain and garden views can be enjoyed here.

A few steps up and you find yourself at the covered terrace and at the entrance door of the house. On this level, the house comprises a spacious living/ dining area, a kitchen with a large adjacent laundry and storage room, three bedrooms and two bathrooms.

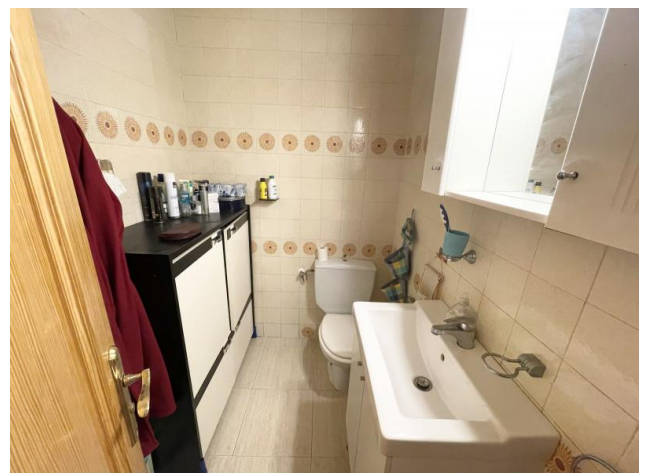
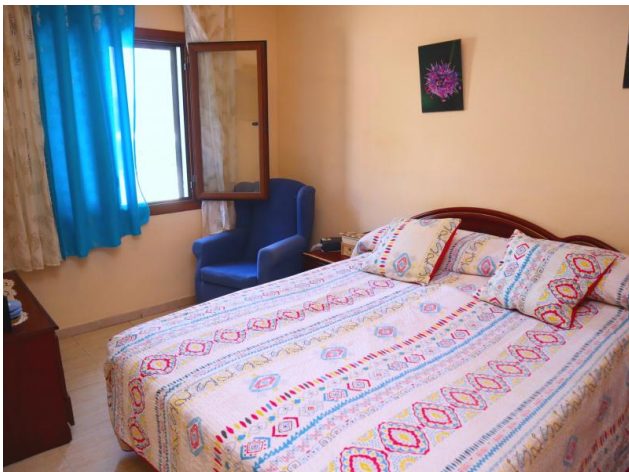
The lower level features an independent guest apartment with one bedroom and one bathroom. A little further up, there is a large basement area with technical room and another room that could be turned into a gym, a home cinema or even as simple as a big storage area.

The location and the views are what make this house unique. This is a great investment opportunity to own a home in a very sought-after area. The beach and the centre of Santa Ponsa are only a short car drive away.

+34 971 612226 - www.mallorca.agency

Sale price does not include costs or taxes. Additional costs for the buyer: inscription and notary fees, ITP 7% or, alternatively 10% VAT and AJD (1.2% on the purchase price) on new properties and subject to some requisites to be met. This info is subject to errors, omissions, modifications, prior sale or withdrawal from the market. Information sheet available, Decree 218/2005 Oct. 11th.

Ref. 43233



+34 971 612226 - www.mallorca.agency

Sale price does not include costs or taxes. Additional costs for the buyer: inscription and notary fees, ITP 7% or, alternatively 10% VAT and AJD (1.2% on the purchase price) on new properties and subject to some requisites to be met. This info is subject to errors, omissions, modifications, prior sale or withdrawal from the market. Information sheet available, Decree 218/2005 Oct. 11th.

Ref. 43233



Ref. 43233

