



Palmanova, Calvia

Stunning frontline apartment with breathtaking views overlooking Palmanova Bay

Ref. 34150 Sold



3



2



89 m²

This stunning frontline apartment provides breathtaking panoramic sea views overlooking Palmanova Bay. The apartment has been fully refurbished recently, and the interior provides a modern homely feel. The bright living spaces of the apartment are flooded with natural light. The open-plan kitchen and its layout are perfect for entertaining friends and family. There are wooden floors throughout the entire flat. The apartment also includes electric blinds and there are awnings on the balcony, which surround the whole corner of this beautiful flat.

The frontline apartment has three spacious bedrooms, providing picturesque views of the sea. There are two bathrooms and built-in wardrobes and storage cupboards. The property comes with a parking space and a storage room. This apartment will be perfect for a permanent family home or a holiday home.

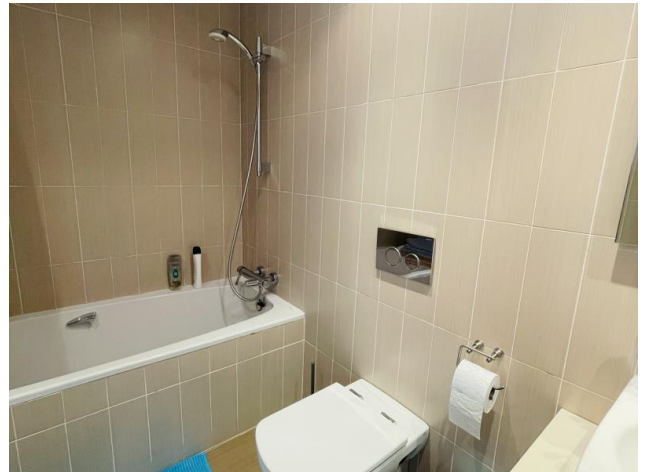
The town of Palmanova is a lovely beach resort in the municipality of Calvià. Palmanova is set by the sparkling Mediterranean sea on the west coast of Mallorca. The long beach with white sea-washed sand has a fine texture and the sea offers crystal clear water.

The beach promenade of Palmanova, which is within a short walking distance from this stunning front line apartment, offers a great variety of shops, restaurants, and cafes. The island's capital Palma and the airport can be reached within 15 minutes by car.

+34 971 612226 - www.mallorca.agency

Sale price does not include costs or taxes. Additional costs for the buyer: inscription and notary fees, ITP 7% or, alternatively 10% VAT and AJD (1.2% on the purchase price) on new properties and subject to some requisites to be met. This info is subject to errors, omissions, modifications, prior sale or withdrawal from the market. Information sheet available, Decree 218/2005 Oct. 11th.

Ref. 34150



+34 971 612226 - www.mallorca.agency

Sale price does not include costs or taxes. Additional costs for the buyer: inscription and notary fees, ITP 7% or, alternatively 10% VAT and AJD (1.2% on the purchase price) on new properties and subject to some requisites to be met. This info is subject to errors, omissions, modifications, prior sale or withdrawal from the market. Information sheet available, Decree 218/2005 Oct. 11th.

Ref. 34150

